

# SOCIETY OF DESIGNER CRAFTSMEN

## PRESS RELEASE



*The Voice of Craft Since 1887*

FOR IMMEDIATE RELEASE: Dated: 14/10/2021

### Designer Craft Showcase from the Society of Designer Craftsmen

The poster features the Society of Designer Craftsmen logo at the top left. Below it, the text reads 'SOCIETY OF DESIGNER CRAFTSMEN THE VOICE OF CRAFT SINCE 1887'. A yellow banner contains the dates 'November 2<sup>nd</sup> - 13<sup>th</sup>', times 'Tues-Sat | 10:30am - 5pm', and 'Free Entry'. The main title 'DESIGNER CRAFT SHOWCASE' is in large, bold letters. Below this, it says 'RBSA Gallery' followed by a list of items: 'a celebration of contemporary craft with work on sale from a wide collection of highly regarded designer makers'. At the bottom, it provides the location 'RBSA Gallery, 4 Brook St, Birmingham B3 1SA' and a website link 'unique.cakes.launch'. On the right side of the poster, there is a vertical strip of colorful fabric swatches. The name 'Jacqueline James FSDC' is printed at the bottom right of the poster.

**At the RBSA Gallery, Brook St, Birmingham, B3 1SA**

**Tuesday 2nd November – Saturday 13th November 2021, 10:30am - 5pm**

The Society of Designer Craftsmen is very proud to present its 'Designer Craft Showcase' at the RBSA Gallery in Birmingham. Come along to see some wonderful craft as well as to find out who we are, what we do and how to join us.

Established in 1887, with William Morris as one of its early presidents, the Society of Designer Craftsmen continues to promote and support the work of creative thinkers, designers, and makers who innovate through the exploration of materials and skills in their own field.

Combining inventive design with supreme craftsmanship, more than 20 SDC Members have been selected to showcase their original and inspiring work including textiles, ceramics, sculpture, glass, furniture and boxes, silver and jewellery. All works are for sale and commissions can be undertaken so the exhibition offers an ideal opportunity to acquire original pieces handmade by some of the UK's finest craftspeople working today. There will also be an information area about the Society and its links to the Midlands, and SDC members on hand to explain more about the Society and answer any questions.

The Showcase is in two parts: In Gallery 1 'Ultimate Designer Craft' will demonstrate the design and craftsmanship of SDC members at its absolute best. It will contain a curated display of works across a range of crafts which exemplify excellence and creativity.

In Gallery 2 'Designer Craft at Christmas' will contain a wide range of works of unique handmade pieces, from both well-established as well as up-and-coming SDC members, which are for sale and immediate take-away at prices ranging from a few pounds up to £500.

There will also be an area about the SDC, its past, present and aims for the future, as well as how to join us. SDC members will be present everyday to explain our work, answer questions and give an insight into the world of contemporary craft making.

Kate Mason, the Chair of the Society of Designer Craftsmen, says,

“The creative metropolis of Birmingham has a long tradition of radical thinking and dynamic social, artistic, and civic engagement. Applied arts, crafts and practical training colleges have also long played a key role in the development of Birmingham and remain part of the city's 'DNA' and unique cultural identity.

With the above in mind, it is with great delight that the Society of Designer Craftsmen (formerly known as The Arts and Crafts Exhibition Society) today announces that its next exhibition will be held at the RBSA - The Royal Birmingham Society of Artists. Dating back to the early 1800's, the RBSA is one of the oldest art societies in the UK and officially formed as the Birmingham Society of Artists in 1821.

Both the RBSA and the SDC played an influential role in the late Victorian period, with many leading figures of the time involved in both Societies. These individuals were the change-makers of their time, encouraging people to re-examine the role and value of art, craft, and design against a flux of shifting societal beliefs, economic structures, and civic values.

The RBSA initiated the development of The Birmingham School of Art in 1843. This School continued to be developed by a pioneering group of thinkers and supporters – many were followers of Ruskin's ideologies around art, craft, and design, and the city quickly became a crucible of creativity and liberal progressive thinking.

Many individuals associated with The Arts and Crafts Exhibition Society (now known as The Society of Designer Craftsmen) had strong ties with Birmingham School of Art. Walter Crane and William Morris, the first two Presidents of The Society of Designer Craftsmen, were regular visitors and champions of the work undertaken at Birmingham School of Art. William Morris was the Schools President in 1878 and, later, examiner and commissioner, and in 1889 Walter Crane became an examiner for the school as well as giving lectures and teaching.

Both the RBSA and the SDC continue to flourish today – both having an illustrious heritage and arts-historical pedigree, alongside contemporary craft, making and design communities and memberships.

It is these unique civic and creative identities that make connecting with the people and places of Birmingham and the RBSA such a privilege and a pleasure. We hope you will come and visit us to hear about all our work and see how you can get involved.”

#### **Exhibitors Include:**

[Adam Aaronson FSDC](#)

[Jan Beaney FSDC](#)

[Anita Bell MSDC](#)

[Alison Dupernex MSDC](#)

[Antonello Figlia LSDC](#)

[Julie Harper MSDC](#)

[Kayley Holderness FSDC](#)

[Adam Hussain FSDC](#)

[Aran Illingworth MSDC](#)

[Naomi Jacques MSDC](#)

[Jacqueline James FSDC](#)

[Simon Jewell FSDC](#)

[Margaret Jones FSDC](#)

[Imahiko Kawamura MSDC](#)

[Sue Lancaster FSDC](#)

[Pat Moloney FSDC](#)

[Liz Ramsay LSDC](#)

[Lilly Reid LSDC](#)

[Pam Schomberg FSDC](#)

[Anna Steiner MSDC](#)

[Bridget Tennent MSDC](#)

[Michele White MSDC](#)

[Toby Winteringham FSDC](#)

#### **ENDS CONTACT**

For further information, quotes, comments, images and interviews:

E: [exhibitions@societyofdesignercraftsmen.org.uk](mailto:exhibitions@societyofdesignercraftsmen.org.uk)

## NOTES TO EDITORS

### About the Society of Designer Craftsmen:

The Society promotes and supports the work of creative thinkers, designers and makers who continue to innovate in the crafts through their exploration of materials and skills.

The Society is run by a dedicated council of current Society members. Our national membership is made up of professional designer makers across various craft disciplines. We support our members through major exhibitions, professional and creative networks, workshops, mentoring and many other events and initiatives.

As the oldest multi-disciplinary Society in the UK, we are proud to have included within our ranks some of the most important designer makers of the past, as well as a growing number of the finest, most exciting and respected designer makers of today.

<https://societyofdesignercraftsmen.org.uk/>

### About the RBSA

Dating back to the early 1800's, the RBSA is one of the oldest art societies in the UK. The Royal Birmingham Society of Artists (RBSA) is an artist-led charity which supports artists and promotes engagement with the visual arts through a range of exhibitions, events and workshops. The RBSA runs an exhibition venue, the RBSA Gallery, in Birmingham's historic Jewellery Quarter.

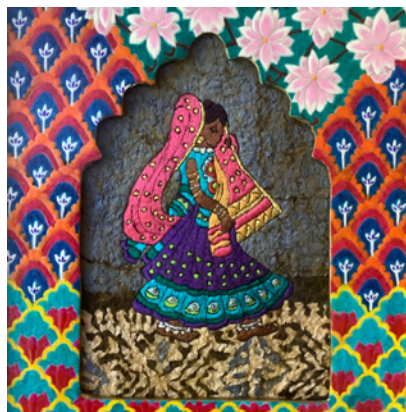
<https://www.rbsa.org.uk/>

### Images:



### From top left, clockwise:

Michele White MSDC, 'Winding Path', jewellery; Pam Schomberg FSDC, 'Handmaiden Jug', ceramics;  
Textile artist Margaret Jones; Julie Harper, 'The Dancer', textiles; Anna Steiner, 'Bird-Sail with Flock', textiles



Est. 1887 Formerly known as 'The Arts and Crafts Exhibition Society'. Founding Presidents, Walter Crane and William Morris.  
Current President & Patron: Sir Christopher Frayling. Company registration No: 02380473 Charity registration No: 328202

[E:info@societyofdesignercraftsmen.org.uk](mailto:info@societyofdesignercraftsmen.org.uk)

[www.societyofdesignercraftsmen.org.uk](http://www.societyofdesignercraftsmen.org.uk)